



Head Office

141, Asiad-daero, Dongnae-gu, Busan, Republic of Korea
TEL: +82-51-503-3751, FAX: +82-51-503-9416

Ulsan 1st Factory

180, Goyeon-ro, Ungchon-myeon, Ulju-gun, Ulsan,
Republic of Korea
TEL: +82-52-257-3751, FAX: +82-52-258-3752

Ulsan 2nd Factory

16, Gyeongongdan 3-gil, Ungchon-myeon, Ulju-gun,
Ulsan, Republic of Korea
TEL: +82-52-265-3751, FAX: +82-52-256-3752

Ulsan 3rd Factory

9-18, Wajigongdan 1-gil, Ungchon-myeon, Ulju-gun, Ulsan,
Republic of Korea

Yangsan 1st Factory

72, Sojugongdan 3-gil, Yangsan-si, Gyeongsangnam-do,
Republic of Korea

Yangsan 2nd Factory

55, Sojugongdan 4-gil, Yangsan-si, Gyeongsangnam-do,
Republic of Korea
TEL: +82-55-383-3751, FAX: +82-55-383-3752

Yangsan 3rd Factory

28, Sonam 3-gil, Yangsan-si, Gyeongsangnam-do,
Republic of Korea

Mokpo Factory

113, Daea-ro, Samho-eup, Yeongam-gun, Jeollanam-do,
Republic of Korea
TEL: +82-61-462-3751, FAX: +82-61-464-3750

YOU SHIN INSULATION

Product Introduction



Best Quality
Best Technical Ability





유신단열(주)은 전 임직원의
“화합”을 기반으로 고객과 함께
풍요로운 미래를 만들어 갑니다.
보온단열 업계에서
선도적 “기술력”을 갖춘 기업으로
“고객 만족”을 통해
신뢰받는 기업이 되고자 합니다.

—

We, You Shin Dan Yeol Co.,LTD.,
are committed to creating prosperous
future with our customers through
the “Harmony” of all employees.
Our “the most advanced technology”
in the world in the insulation industry,
is sustainable development through
“Customer Satisfaction.”

1980

1980년 07월 / July. 1980
 유신단열 설립
 The You Shin Dan Yeol Co.,LTD. is established

1990

1993년 11월 / Nov. 1993
 선박 LNG Ship GTT 인증 획득(NO.96 Type)
 Certified GTT NO96 Type[France, Gaz Transport Certificate]
 - Insulation Materials for Cargo Containment
 - ITEM: Fiber Glass wool, Fiber Glass Cloth, Flexible insulation

1995년 05월 / May. 1995
 삼성중공업 협력업체 등록
 Starting Partnership with Samsung Heavy Industries

1997년 10월 / Oct. 1997
 선박LNG Ship GTT 인증 획득(MarkIII Type)
 Certified GTT MARKIII Type[France, Gaz Transport Certificate]
 - Insulation Materials for Cargo Containment
 - ITEM: Fiber Glass wool, Fiber Glass Cloth

2000

2000년 06월 / Jun. 2000
 울산 제1공장 및 목포공장 준공
 Completion of Ulsan 1st & Mokpo Factory

2000년 08월 / Aug. 2000
 현대삼호중공업 협력업체 등록
 Starting Partnership with Hyundai Samho Heavy Industries

2001년 02월 / Feb. 2001
 현대중공업 협력업체 등록
 Starting Partnership with Hyundai Heavy Industries

2002년 05월 / May. 2002
 현대미포조선 협력업체 등록
 Starting Partnership with Hyundai Mipo Dockyard

2006년 01월 / Jan. 2006
 대우조선해양 협력업체 등록
 Starting Partnership with Daewoo shipbuilding & Marine Engineering

2007년 03월 / Mar. 2007
 유리섬유단열재 특허 8건 취득
 Obtaining 8 patents on Glass Wool Insulation

2007년 05월 / May. 2007
 울산 제2공장 준공
 Completion of Ulsan 2nd Factory

2010

2010년 08월 / Aug. 2010
 선박용 A - 30 & A - 60 class JG CERT 취득/NK
 Certified by JG(Japanese Government) & NK(NIPPON KAIJI KYOKAI) for A-60 Deck and Bulkhead

2010년 12월 / Dec. 2010
 고용창출 100대 우수기업 선정
 Awarded as excellent company for creating jobs

2012년 04월 / Apr. 2012
 울산 제3공장 준공
 Completion of Ulsan 3rd Factory

2012년 06월 / Jun. 2012
 본사 사옥 준공
 Completion of Busan Head Office Building

2012년 08월 / Aug. 2012
 울산 제4공장 준공
 Completion of Ulsan 4th Factory

2014년 05월 / May. 2014
 양산 제2공장 준공
 Completion of Yangsan 2nd Factory

2015년 12월 / Dec. 2015
 무재해 100만 시간 달성 / 표창장 수여(현대중공업)
 Awarded as one million hours without disaster from Hyundai Heavy Industries

2016년 05월 / May. 2016
 양산1공장 준공
 Completion of Yangsan 1st Factory

2017년 07월 / Jul. 2017
 YS - Hardness 특허 출원
 Obtaining the patent on YS-Hardness

2017년 12월 / Dec. 2017
 현대중공업 우수협력회사 선정
 Selected as Excellent Partner of Hyundai Heavy Industries

2018년 12월 / Dec. 2018
 현대미포조선 우수협력회사 선정
 Selected as Excellent Partner of Hyundai Mipo Dockyard

2020

2020년 07월 / July.2020
 양산 제3공장 준공
 Completion of Yangsan 3rd Factory


2021년 03월 / Mar. 2021
 2021년 모범납세자 선정
 Awarded a 2021 Model Taxpayer Prize

HISTORY


주요제품 | MAJOR PRODUCTS

❖ A-Class & Thermal Insulation

• Mineral Wool


-  - YS-HARDNESS Board
- YS-HARDNESS Sound-Absorbing Board
- YS-HARDNESS Round Cover
- YS-HARDNESS Elbow
- Board
- Stiffener Mold
- Pipe Cover
- Round Cover
- Bending & Elbow [Long, Short] Cover
- Valve / Flange / Expansion Joint Mat

• Glass Wool


-  - Board
- Roll

❖ LNG SHIP Insulation

• N096

-  - Glass Wool
- Flexible (F&M type)
- Anti-Sticking Film

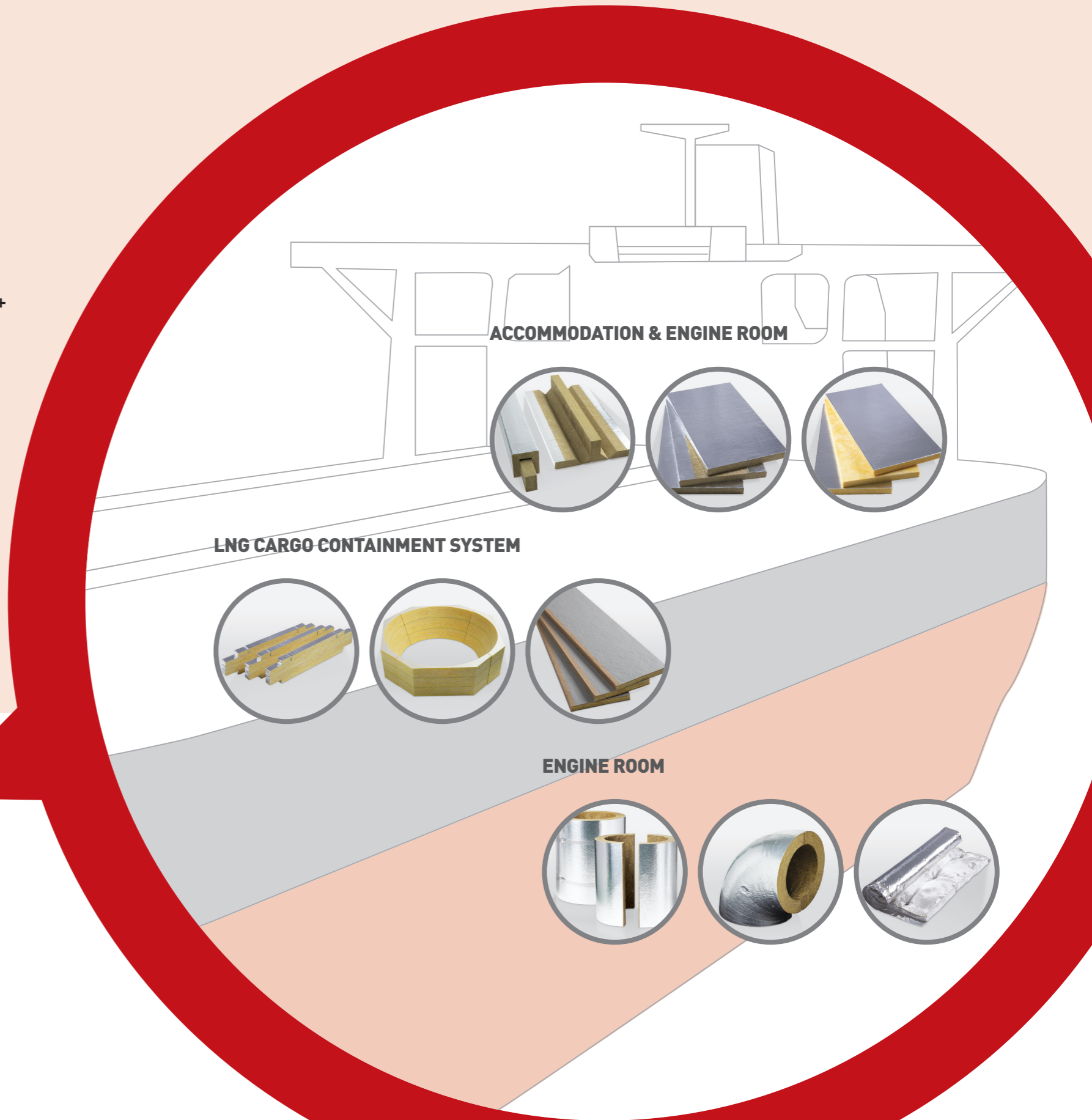
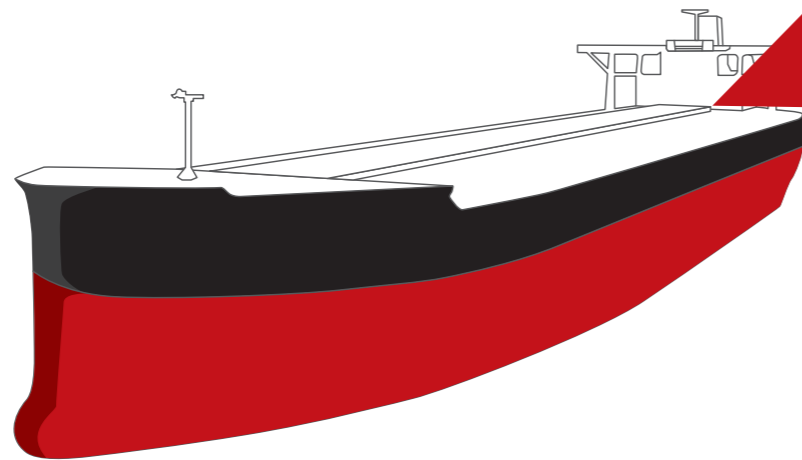
• MARKIII / MARKIII Flex / MARKIII Flex+

-  - Glass Wool
- Glass Cloth

❖ Others

-  - Blanket
- Surface materials & Tape
- Insulation Pin
- Solimide
- Ceramic Wool
- Polyethylene & Polyurethane
- Adhesive
- Rigid

**Best
Quality
Best
Technical Ability**



YS-HARDNESS BOARD

선박 A-CLASS & Thermal 구역에 함석 작업이 필요 없는, 경제적이며 품질성능이 우수한 제품입니다.

This product is , without galvanized steel sheet, economical and has good quality performance at A-Class & Thermal area in ship.

용도 / Applications

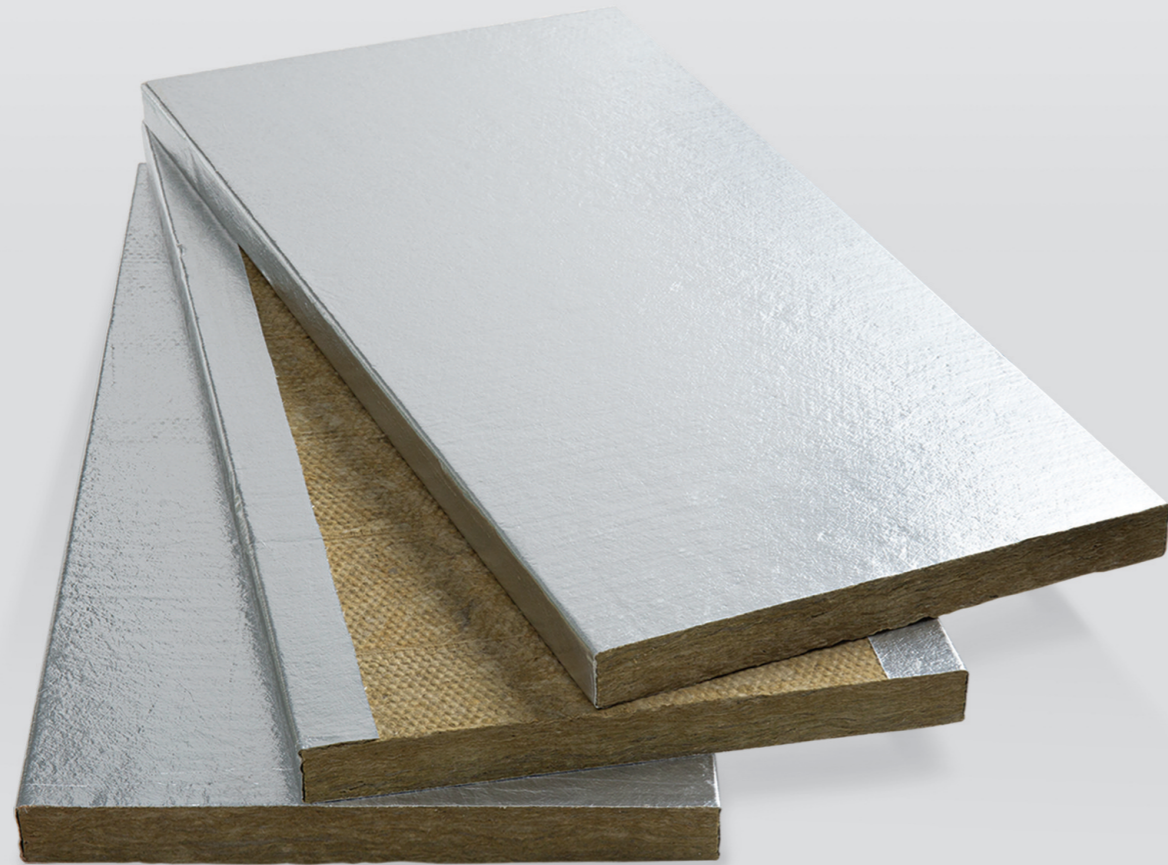
- Vent Trunk (PCTC, A-30/A-60)
- Elevator Trunk
- Escape Trunk
- Passage way (2,300mm below Height, A-60), etc.

밀도 / Density

150kg/m³

효과 / Effect

- Galvanized Steel Sheet 설치 공정 제거 / Skip the Galvanized steel sheet work
- 자재비 및 설치비용 절감 / Reduction of material & installation costs
- 작업성 향상 / Workability Enhancement



YS-HARDNESS SOUND-ABSORBING BOARD

선박 흡음을 요구하는 구역에 Perforated Sheet 작업이 필요 없는, 경제적이며 흡음성능이 우수한 제품입니다.

This product is , without perforated sheet work, economical and has excellent sound absorption performance at Absorption area in ship.

용도 / Applications

Fan Room, Engine Room and others(Wall & Ceiling for Noise Reduction), etc.

밀도 / Density

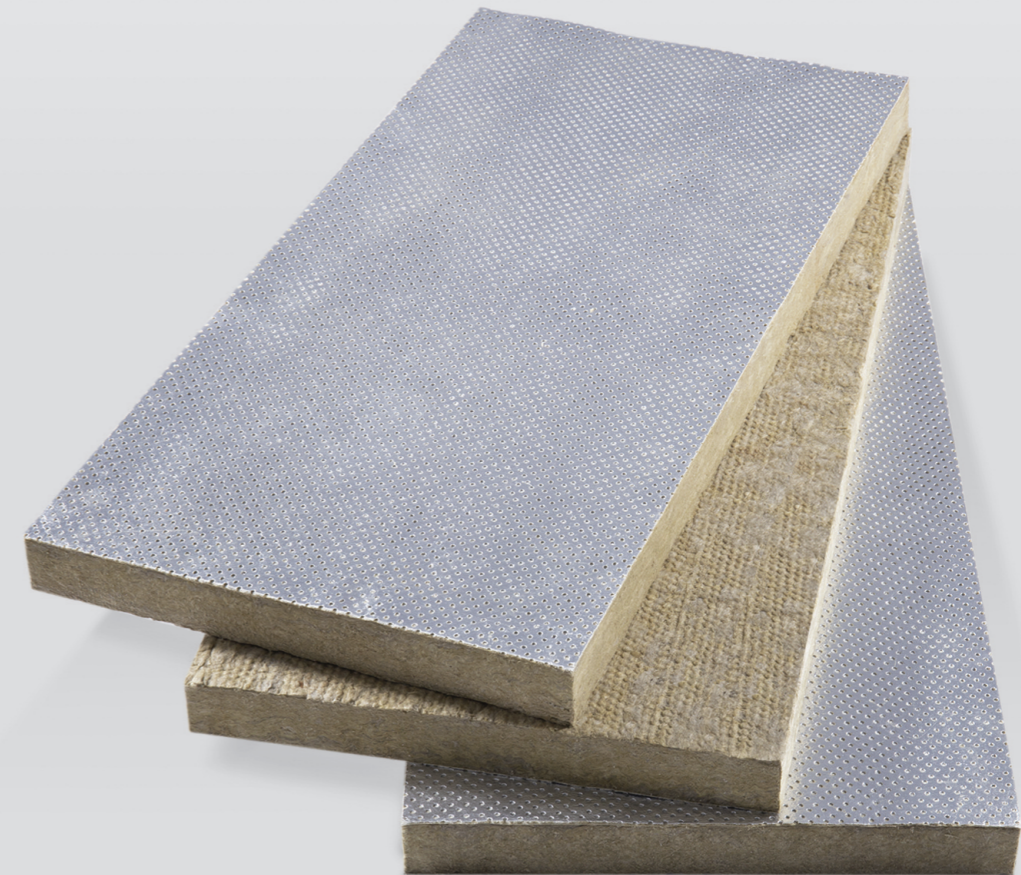
150kg/m³

효과 / Effect

- Perforated Steel Sheet 설치 공정 제거 / Skip the Rerforated sheet work
- 자재비 및 설치비용 절감 / Reduction of material & installation costs
- 작업성 향상 / Workability Enhancement

흡음계수 / NRC

KSF 2805 (NRC : according to KSF 2805)

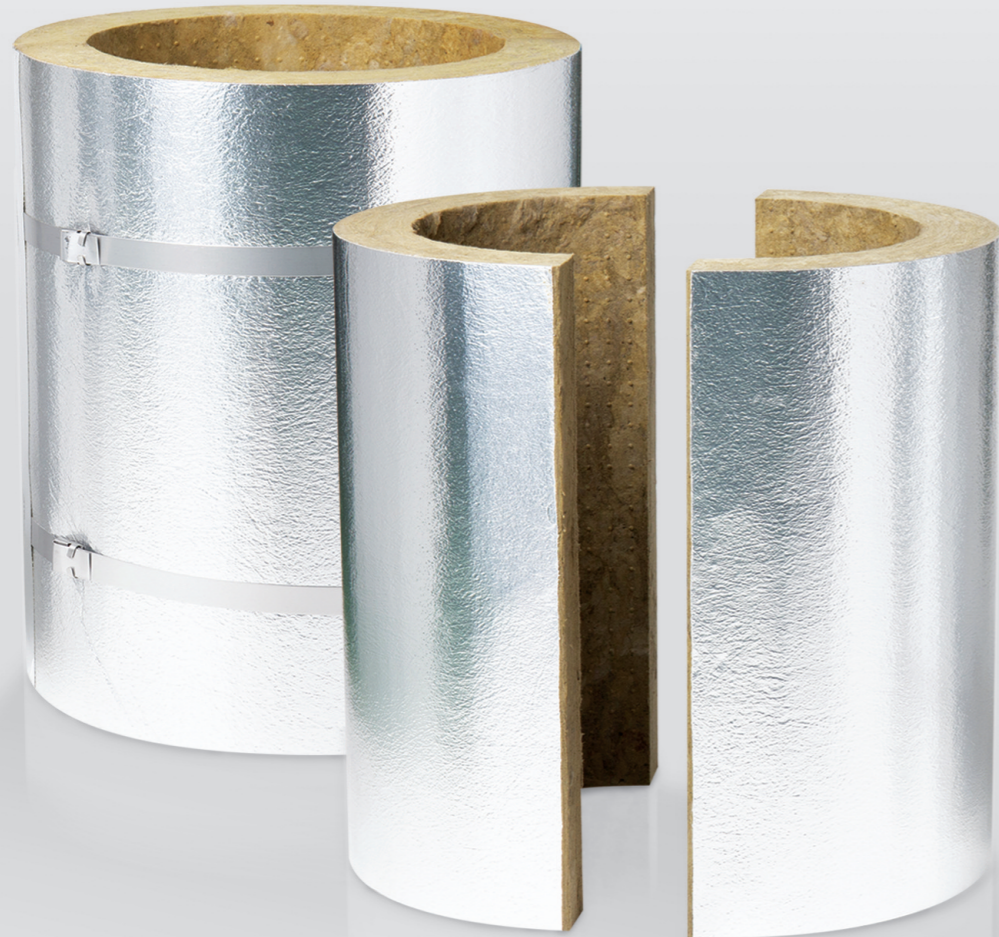


YS-HARDNESS ROUND COVER

고온 배기관의 기존 보온+함석 대체품으로 단열성, 정밀성 및 작업성을 극대화 시킨 우수한 제품입니다.

This product is, the better replacement for original method "Insulation material + Galvanized steel sheet", also it has better thermal performance, precision and workability.

용도 / Applications	효과 / Effect
Exhaust Gas Pipe (Engineroom, Casing, Funnel)	<ul style="list-style-type: none"> Galvanized Steel Sheet 설치 제거 / Skip the Galvanized steel sheet work 자재비 및 설치비용 절감 / Reduction of material & installation costs 기존제품 대비 단열성 향상 / Improved thermal performance over existing products
밀도 / Density	
150kg/m ³	

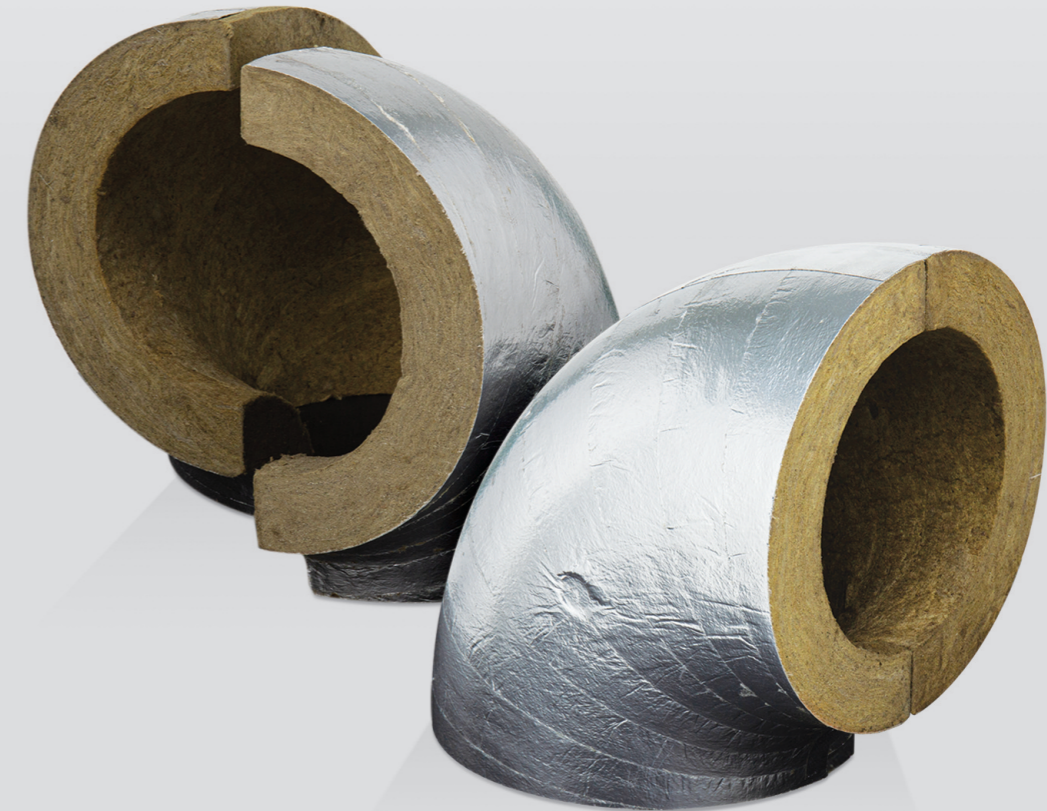


YS-HARDNESS ELBOW

고온 배기관의 기존 보온+함석 대체품으로 단열성, 정밀성 및 작업성을 극대화 시킨 우수한 제품입니다.

This product is, the better replacement for original method "Insulation material + Galvanized steel sheet", also it has better thermal performance, precision and workability.

용도 / Applications	효과 / Effect
Exhaust Gas Pipe/ Elbow / Miter Bending (Engineroom, Casing, Funnel)	<ul style="list-style-type: none"> Galvanized Steel Sheet 설치 제거 / Skip the Galvanized steel sheet work 자재비 및 설치비용 절감 / Reduction of material & installation costs 금형틀 제작품으로 치수정밀도 및 작업성 우수 / Excellent dimensional accuracy and workability with mold-making materials
밀도 / Density	
150kg/m ³	



MINERAL WOOL BOARD

선박 A-CLASS 적용품으로 Wall & Ceiling에 적용되며 시공성이 우수한 제품입니다.

This is applied to the Wall & Ceiling as A-Class application and has excellent workability.

용도 / Applications

- Interior Material for ship
- Industrial Plant
- Building
- Duct

생산규격 / Production Standard

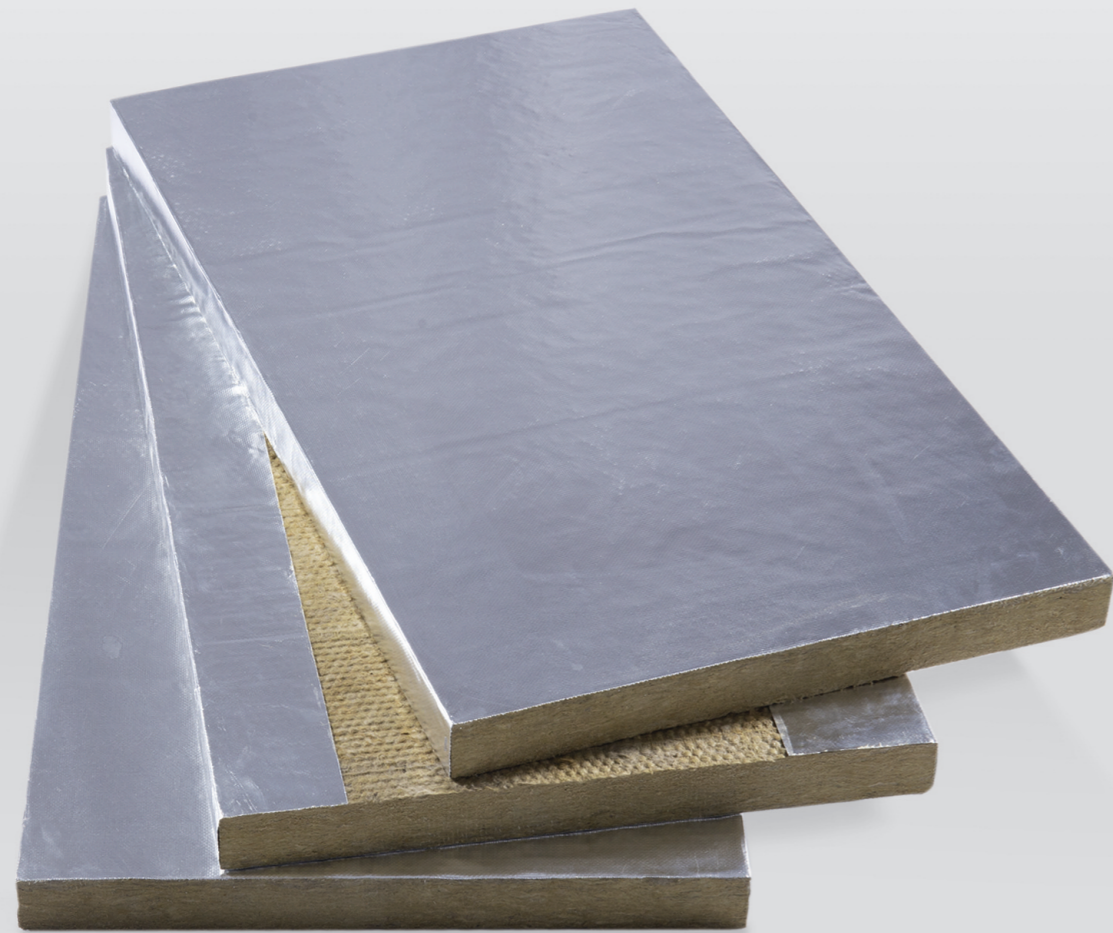
25mm, 40mm, 50mm, 75mm
Thickness and Surface Material would be variable by customer's order.

밀도 / Density

100kg/m³, 110kg/m³, 120kg/m³, 150kg/m³

표준규격 / Standard specification

FTP Code 2010, KS L 9102, JIS A 9504, ASTM C 612



MINERAL WOOL PIPE COVER

단열효과가 높으며 시공이 간편하여 파이프, 배관설비 등의 보온 단열용으로 우수한 제품입니다.

This product is excellent for thermal insulation such as pipes and plumbing facilities due to its high thermal insulation and easy workability.

용도 / Applications

Pipe insulation

생산규격 / Production Standard

15A ~ 500A / Thickness 30mm, 50mm, 75mm

밀도 / Density

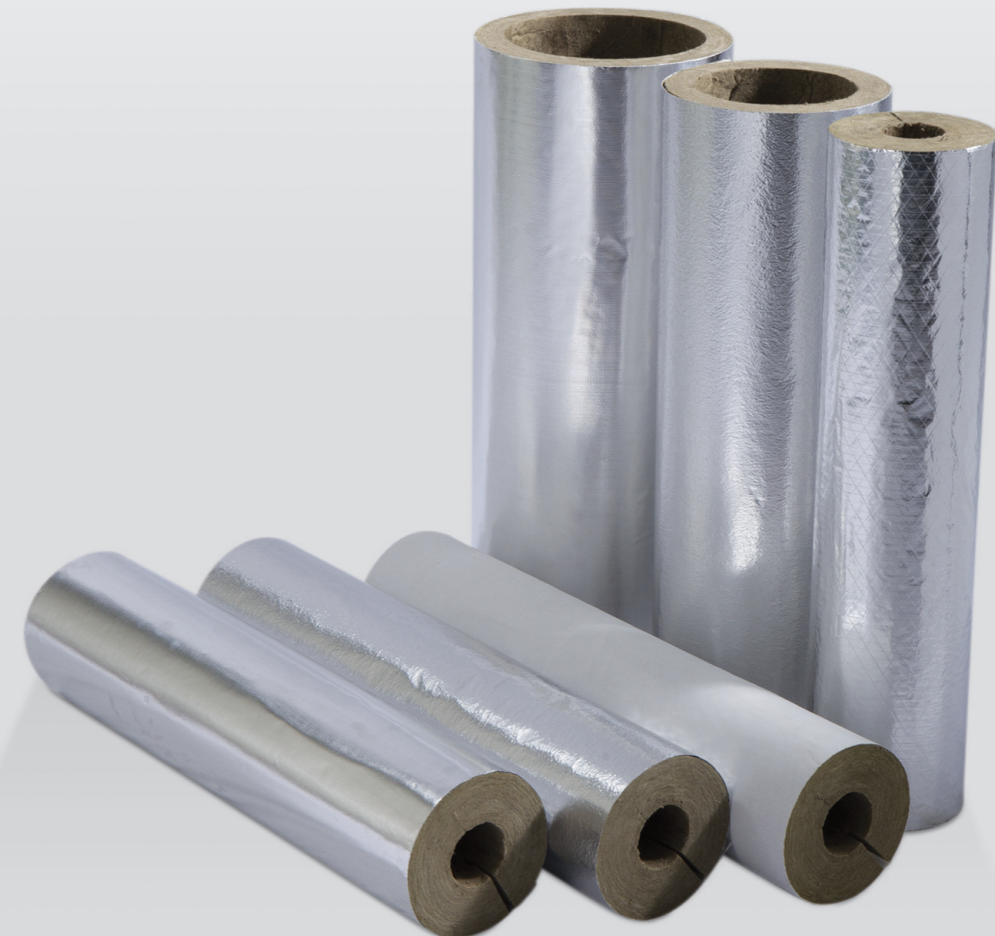
110kg/m³, 120kg/m³

표준규격 / Standard

KS L 9102, JIS A 9504,
FTP Code 2010, ASTM C 547

부착품 / Surface Material

Glass Cloth, Glass Cloth with AL-Foil (ALGC)



MINERAL WOOL ROUND COVER

단열효과가 높으며 시공이 간편하여 파이프, 배관설비 등의 보온 단열용으로 우수한 제품입니다.

This product is excellent for thermal insulation such as pipes and plumbing facilities due to its high thermal insulation and easy workability.

용도 / Applications	생산규격 / Production Standard
Above 550A PIPE	550A ~ 3700A
표준규격 / Standard	밀도 / Density
FTP Code 2010	110kg/m ³ , 120kg/m ³



BENDING & ELBOW(LONG, SHORT) COVER

단열효과가 높으며 시공이 간편하여 파이프, 배관설비 등의 보온 단열용으로 우수한 제품입니다.

This product is excellent for thermal insulation such as pipes and plumbing facilities due to its high thermal insulation and easy workability.

용도 / Applications	생산규격 / Production Standard	
ELBOW (Short, Long), Bending	ELBOW	15A ~ 600A
	BENDING	15A ~ 200A
표준규격 / Standard	밀도 / Density	
FTP Code 2010	110kg/m ³ , 120kg/m ³	



STIFFENER MOLD

선박 A-CLASS 보강재의 편리한 시공성을 위한 당사 고유 개발품이며, 기존 보강재 시공 시 “현장 형취 가공”에 따른 문제점을 개선하여 “접이식 가공(일체형)”으로 작업성이 우수한 제품입니다.

This is our unique development product for convenient workability of A-Class part in ship. It improves the problem of existing stiffener about “field measurement & processing” and has excellent workability as a “customized single type processing”.

용도 / Applications

A-30 / A-60 Class
(Insulation material in Stiffener)

생산규격 / Production Standard

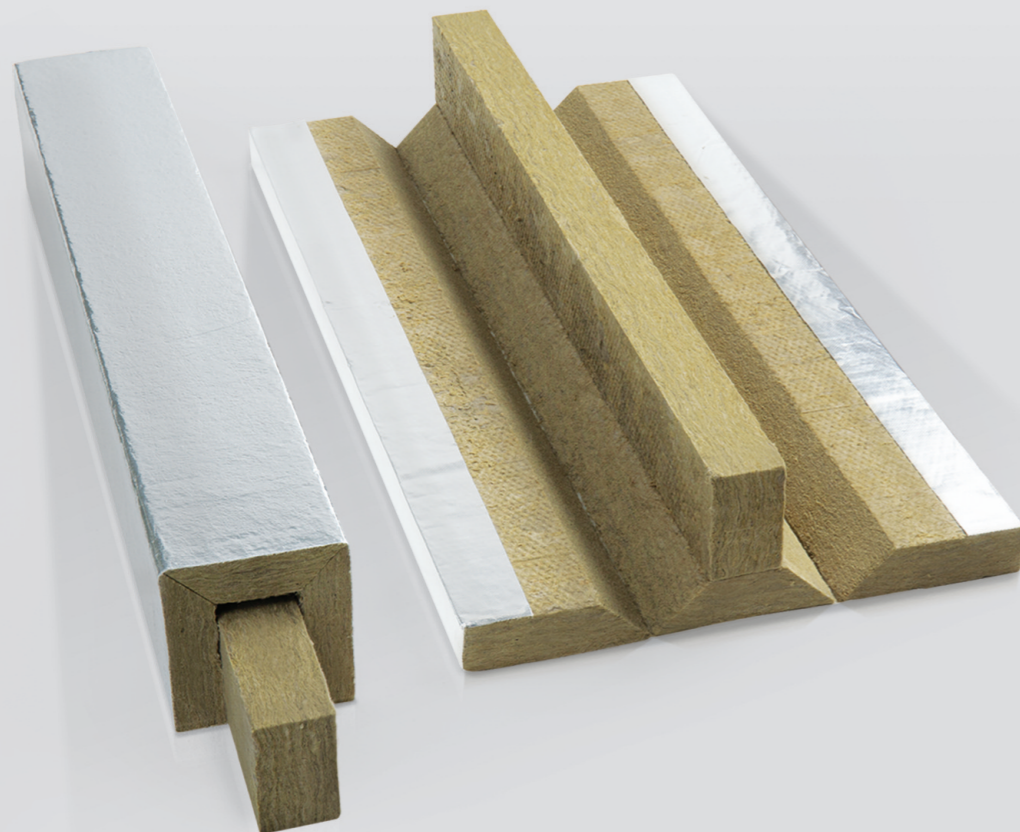
Thickness, Size and Surface Material are adjusted by customer's order

밀도 / Density

100kg/m³, 110kg/m³, 120kg/m³,
150kg/m³(YS-HARDNESS)

효과 / Effect

- 작업 및 시공성 향상 / Improving work and workability
- 생산능률 극대화로 인한 작업공기 단축 / Reduced duration of work due to maximization of productivity
- 작업환경개선 (Scrap 최소화) / Improving the working environment (minimizing scrap)



VALVE / FLANGE / EXPANSION JOINT MAT

각종 배관라인에 있는 Valve, Flange 및 Expansion Joint의 보온작업에 사용되는 제품입니다.

This product is insulation material for Valve, Flange and Expansion Joint in various piping lines.

용도 / Applications

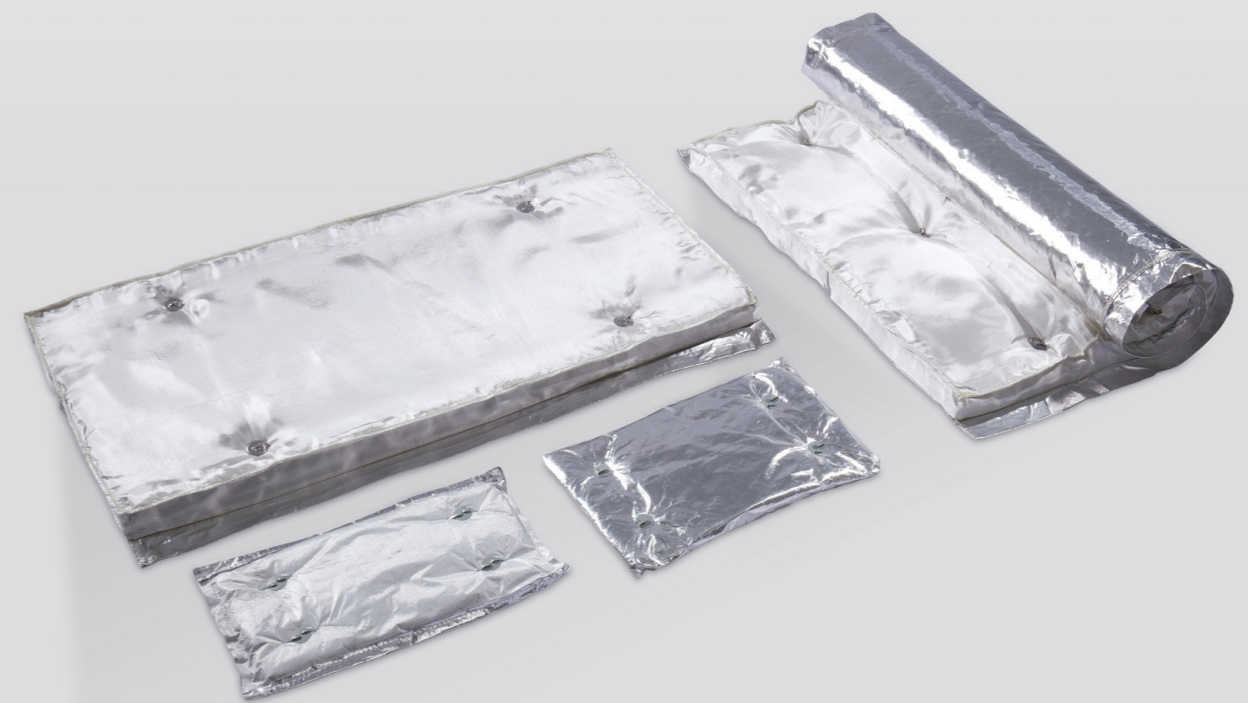
Mat for Valve & Flange &
Expansion Joint

생산규격 / Production Standard

JIS, DIN, ANSI
50A ~ 3700A

밀도 / Density

80kg/m³, 100kg/m³



GLASS WOOL BOARD

강도 및 내구성이 높고 뛰어난 보온 단열과 흡음능력이 우수한 제품입니다.

This product is excellent with high strength, durability, thermal insulation and sound absorption.

용도 / Applications

- Interior Material for ship
- Interior Material for Car
- Soundproof Wall
- Duct
- Building

표준규격 / Standard

KS L 9102, JIS A 9504, ASTM C 665

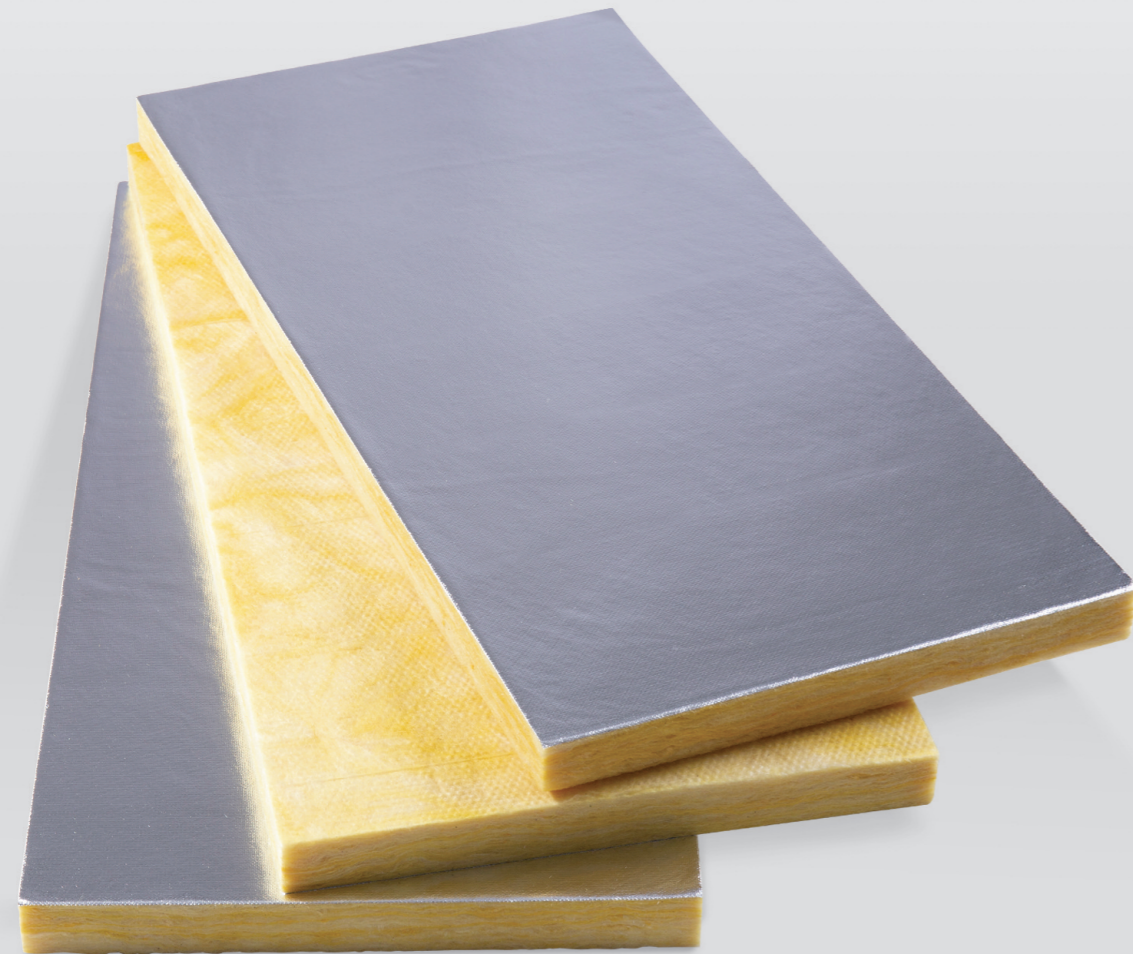
생산규격 / Production Standard

두께 / Thickness	25mm~150mm
----------------	------------

사이즈 / Size	1m x 1m, 1m x 2m
------------	------------------

밀도 / Density

32kg/m³ ~ 64kg/m³



GLASS WOOL ROLL

강도 및 내구성이 높고 뛰어난 보온 단열과 흡음능력이 우수한 제품입니다.

This product is excellent with high strength, durability, thermal insulation and sound absorption.

용도 / Applications

- Interior Material for ship
- Interior Material for Car
- Soundproof Wall
- Duct
- Building

표준규격 / Standard

KS L 9102, JIS A 9504

생산규격 / Production Standard

1m x 20m (25T), 1m x 10m (50T), 1m x 7m (75T)

밀도 / Density

24kg/m³

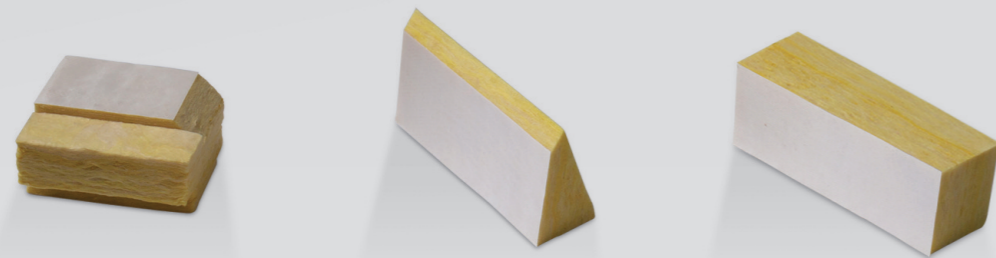
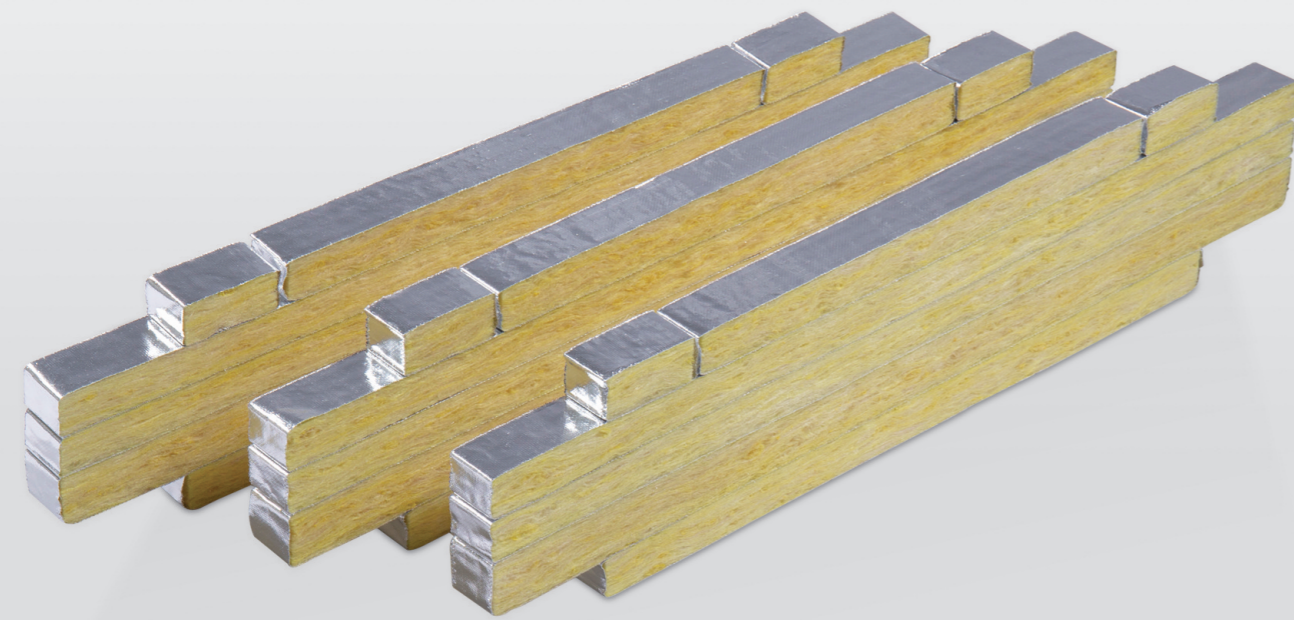


N096

선박 LNG선 화물창의 보냉재 적용품으로 "GTT 인증"을 획득한 단열성이 우수한 제품입니다.

This product is the cold insulation material at CCS (Cargo Containment System) in LNG Ship and it is a superior product with GTT certification.

- GLASS WOOL
- FLEXIBLE(F&M TYPE)
- ANTI-STICKING FILM

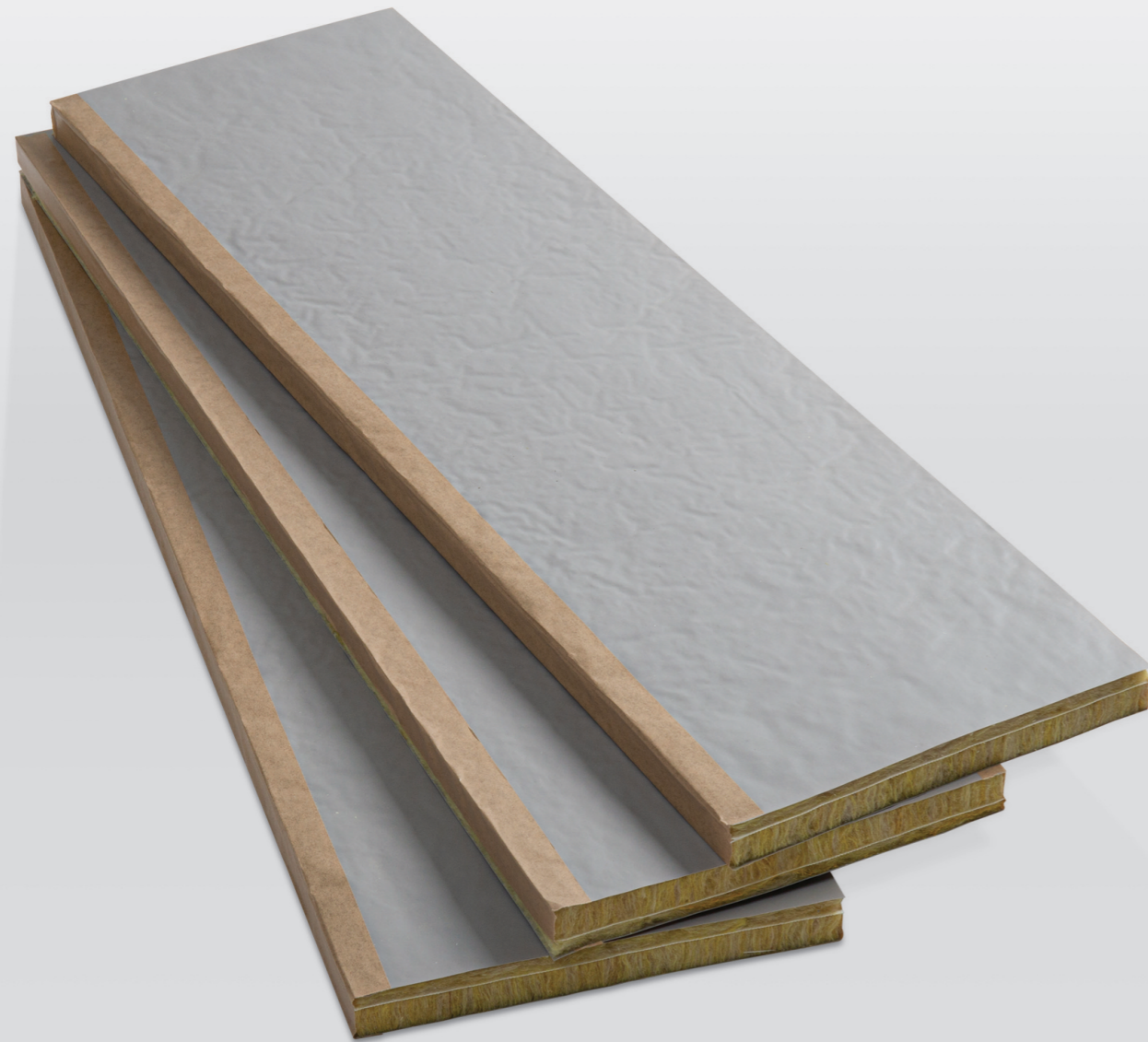


MARKIII / MARKIII FLEX / MARKIII FLEX+

선박 LNG선 화물창의 보냉재 적용품으로 "GTT 인증"을 획득한 단열성이 우수한 제품입니다.

This product is the cold insulation material at CCS (Cargo Containment System) in LNG Ship and it is a superior product with GTT certification.

- GLASS WOOL
- GLASS CLOTH

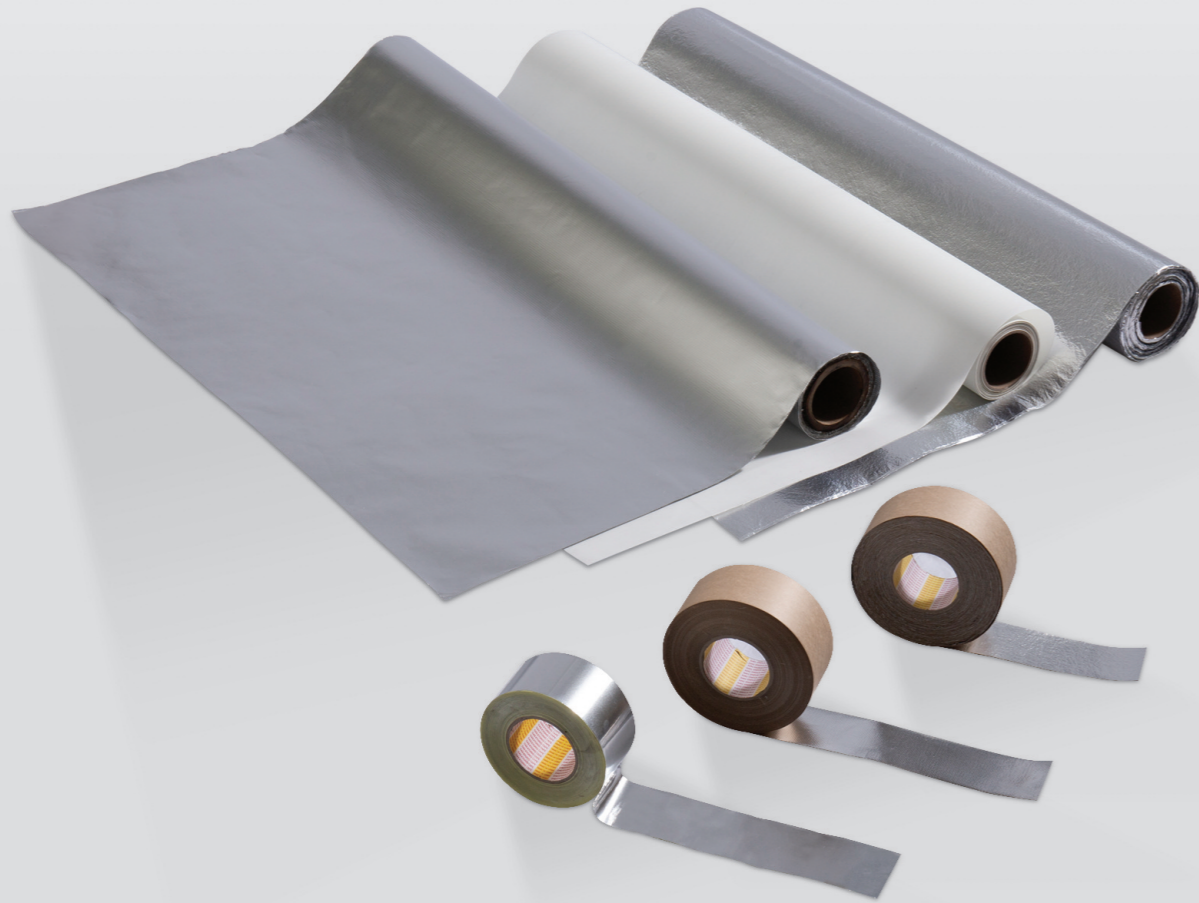


SURFACE MATERIALS & TAPE

보온단열 시공부위의 마감을 위해 사용되는 제품입니다.

This product is used for finishing thermal insulation material.

구성품 / Components	폭 / Thickness
Aluminum Tape, Glass Cloth Tape, Glass Cloth with AL-Foil Tape	50mm / 75mm / 100mm
	길이 / Length
	50m/RL

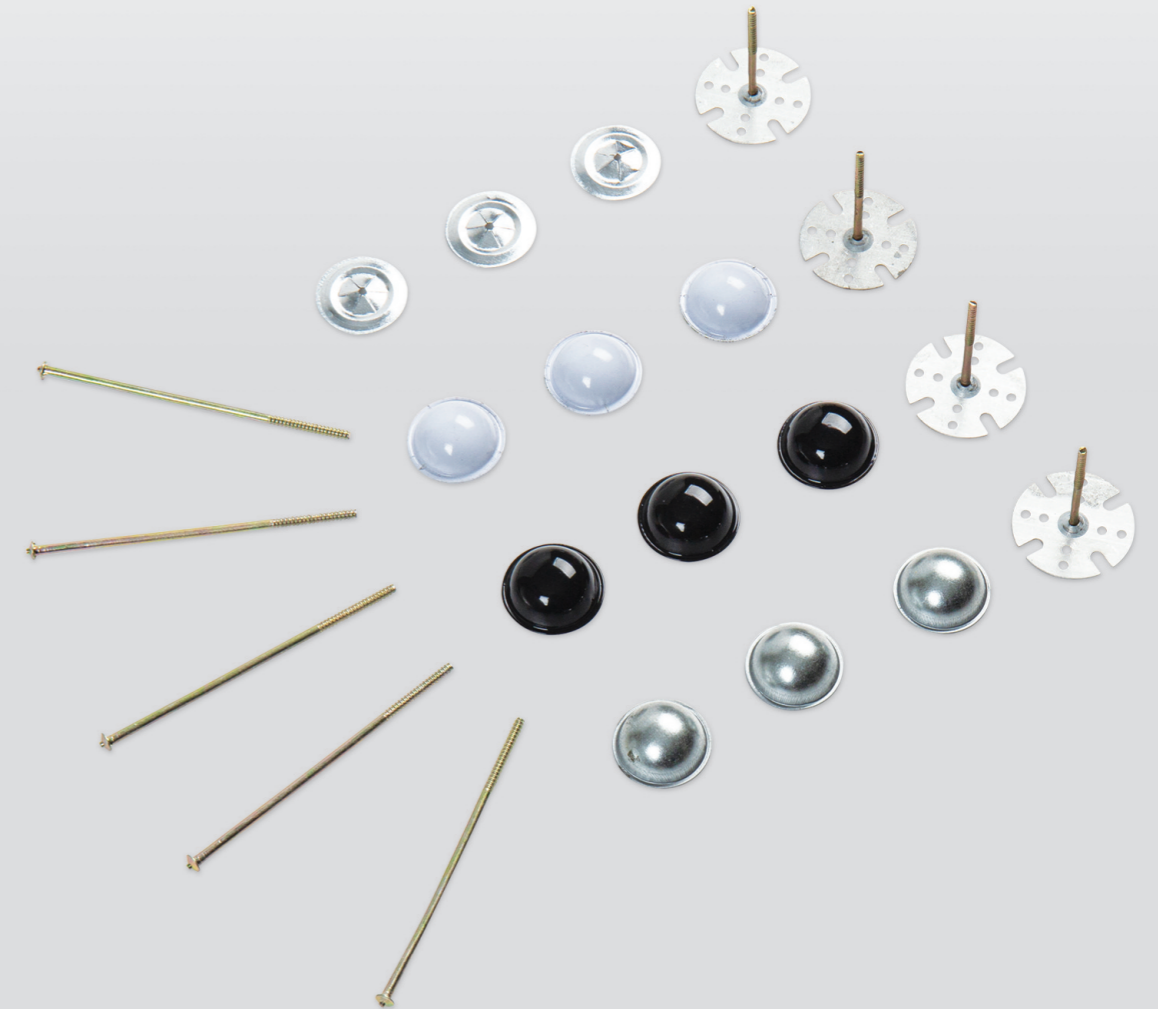


INSULATION PIN

보온, 단열 시공부위의 고정 및 마감을 위해 사용되는 제품입니다.

This product is used for finishing thermal insulation material.

용도 / Applications	생산규격 / Production Standard
Fixing the thermal insulation material	Length 25mm ~ 250mm other sizes can be made according customer's order.



새로운 시대,
새로운 미래를 향한
유신단열(주)의 도전은
계속됩니다.

A New Era

Toward a New Future

YOU SHIN DAN YEOL CO., LTD.'s

Challenge continues.

